



Data Storage Master

User Manual

D2 Thunderbolt3

Contents

1. OVERVIEW 2

2. PACKING CONTENTS 2

3. APPEARANCE 3

4. HARDWARE INSTALLATION 4

5. CONNECTION 5

6. RAID 5

7. DATA RECOVERY 7

1. Overview

TDAS is the collective name of the TerraMaster Direct Attached Storage. This device belongs to the TerraMaster TDAS device series. Please read the instructions carefully before use. If you have any questions, please visit the “Support” section on TerraMaster’s official website or contact TerraMaster’s technical support team.







When you receive your newly purchased TDAS device, please visit to TerraMaster’s official website (www.terra-master.com) first, find the page of “Quick Guide”, and perform the installation and make changes to the settings according to the Guide.

In order to meet the improvement requirements of this device, the external design, specifications and other aspects of this device may be changed from time to time without prior notice.

Please note that the pictures and illustrations in this manual are only intended as an illustration may be different from the real device.

2. Packing Contents

When you receive your newly purchased device, please check whether the package contains the following articles. If any of them are missing, please contact our dealer in time.

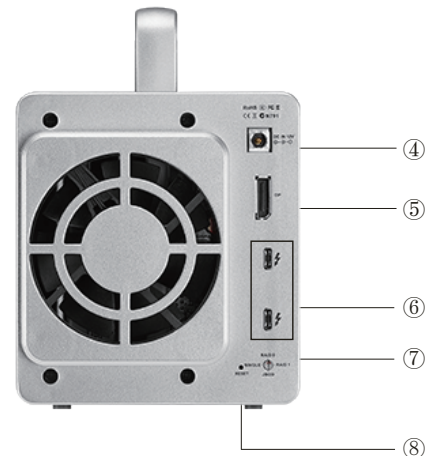
Main unit	Power cord	Power adapter	Several screws
			
	Quick guide	Thunderbolt3 Cable	
			

3. Appearance

Illustration of panel:



Illustration of rear cover:



NO	Indicator	Description
①	HDD Indicator	1. Green on: The hard drive works fine. 2. A flashing green light indicates the hard drive is being read. 3. A flashing red light indicates failure of the hard drive or RAID. 4. A falshing orange light indicates RAID being rebuilt. 5. Off indicates if the hard drive has entered sleep mode, lack of detection or non-connection of the device to the computer.
②	Power indicator	1. Steady on: Powered on 2. Off: Powered off 3. Red: Standby
③	Power Switch	Short press once to power on, andpress for 3 seconds to power off.

NO	Interface	Description
④	Power Jack	Power input interface. Please note that you should not use any power adaptor other than the original. If you do, the device may be damaged.
⑤	DP Port	Use this to connect the DP monitor.
⑥	Thunderbolt 3 interface	Use this to connect a computer or another Thunderbolt 3 device.
⑦	RAID switch	Rotate to switch different RAID
⑧	RESET button	Press and hold the RESET button for 10s to let the newly set RAID take effect and clean all data on hard drives.

4. Hard drive Installation

Prior to use, hard drives must be installed properly into the device. Therefore, if you have no hard drives for your device, please purchase a compatible one and oversee its installation.

To install a hard drive, please complete the following instructions:

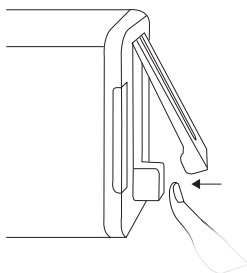
1. Pull the handle out of the hard drive tray, Grasp it and draw the hard drive tray from the device. Fix in the hard drive and tray by using the given screws and insert the tray into the device along the track. While inserting the tray, please open the handle and keep the handle in this position. Otherwise, the tray may not be inserted into the device correctly.

2. After the tray is fully inserted, the handle should be closed. The hard drive installation is completed. If you would like to install the remaining hard drives you have, please refer to steps above.



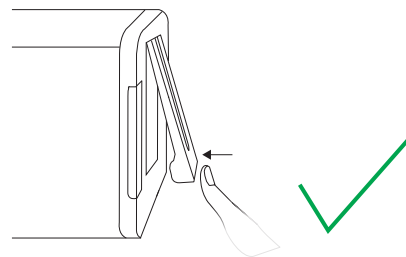
Warning! Please do it right!

step 1

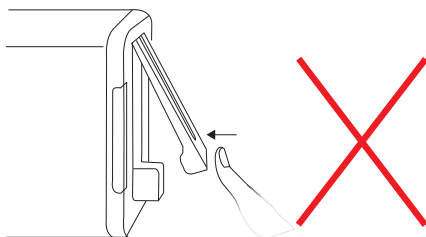


1. Push the lower part of the hard drive tray to fully insert it.

step 2



2. Lock the tray by pressing the handle after completing insertion of it.



3. The hard drive tray is locked without fully inserting it; if the hard drive is not inserted fully, taking out fails or read/write is unstable.

5. Connection

Before use, power on the device and connect the data interface to your computer.

Procedure for connection:

Step 1: Connect one end of the USB Type-C cord to the Thunderbolt3 interface of this device, and connect the other end to the USB interface of your computer.

Step 2: Please connect the device a power source by using the power adapter. The power adapter provides 12V DC;

Warning: do not use the non-original power adapter for this device. Otherwise, the device may malfunction and the physical body may be damaged in an extreme case!

Step 3: Press the power button to power on. When the power is connected, the device's power indicator will turn on.

Step 4: If the hard drives work normally and the device powers on, the hard drive indicator will temporarily display red, followed by Blinking orange, followed by Blinking green, and finally green lights. If the hard drive indicator displays red all the time, it indicates that the hard drive is cannot be read. The hard drive may be damaged, incompatible with the device. If this occurs, please turn off the device and proceed to reinstall the same hard drive. If the hard drive indicator still displays red, please replace the hard drive with a new one and try again.

Step 5: After the device is connected to your computer, you might see a prompt asking you to format the device or come across a message reading "The disk you inserted was not readable by this computer". Please select "Cancel" or "Ignore", as the formatting of the device should occur only after you create a disk group.

6. RAID

Procedure for creating or changing RAID:

Step 1: Connect this device to your computer through a USB type C cord, and power it on.

Step 2: Choose a RAID for the device (the factory default is SINGLE). To choose a RAID type, use a screwdriver to rotate the rotary switch on the rear cover of this device to turn the pointer to the desired RAID type.

Step 3: Use a thimble to press and hold the RESET button for 10s to let the newly set RAID take effect.

Step 4: Format RAID. After setting RAID, you need to initialize and format the RAID on your computer. The procedure for initialization and formatting is the same for hard drive initialization and formatting. As for the detailed procedure for hard drive initialization and formatting, please look it up online.

Step 5: After initialization and formatting, the device is ready for use.

Troubleshooting

If the hard disk indicator is red, the hard drive has not been recognized correctly; the hard drive may have been used on another device previously, which can lead to incompatibility. If you encounter issues of this kind, use the following steps to initialize your hard drive:

Warning!

Creating or changing a RAID mode may cause your hard drive to be formatted. All hard drive data will be deleted in this case. Please ensure that you back up your data in advance of taking these steps.

Step 1: Connect the device to the computer and turn both of them on;

Step 2: Rotate the pointer to SINGLE mode, then press and hold the "Reset" button for 10 seconds. If the hard disk indicator turns green, the hard drive has been successfully recognized and initialized.

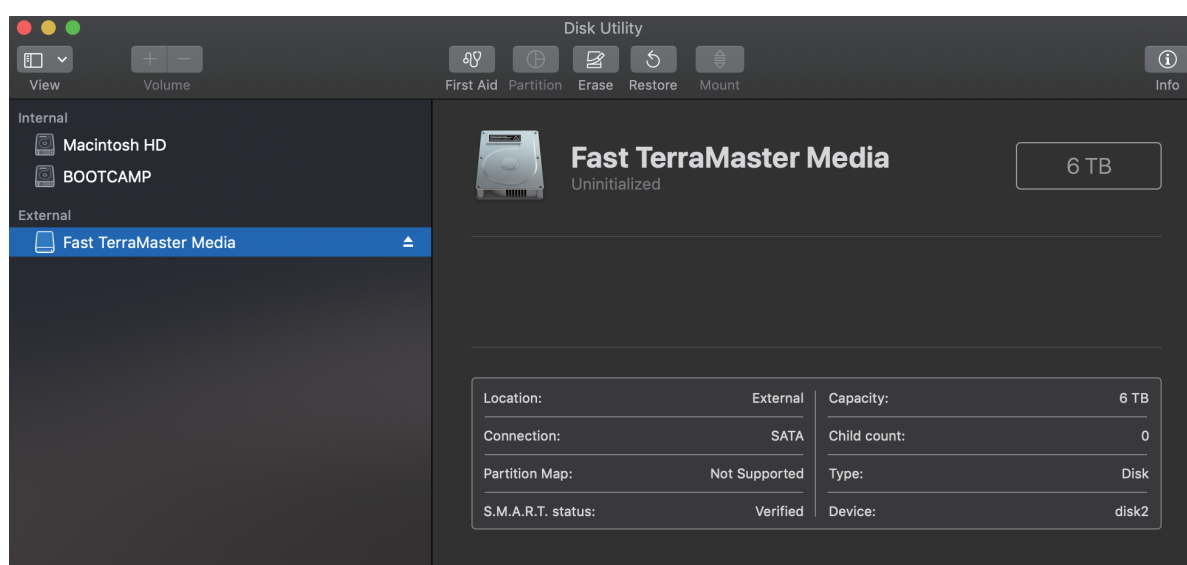
Step 3: If the hard drive indicator remains red, the hard drive initialization has failed again. Rotate the pointer to RAID 0 mode, then press and hold the “Reset” button for 10 seconds. If the hard drive indicator turns green, the hard drive has been recognized and successfully initialized.

Step 4: If the hard drive indicator remains red, hard drive initialization has failed again; In this case, you have to repeat Step 2 until the initialization is successful.

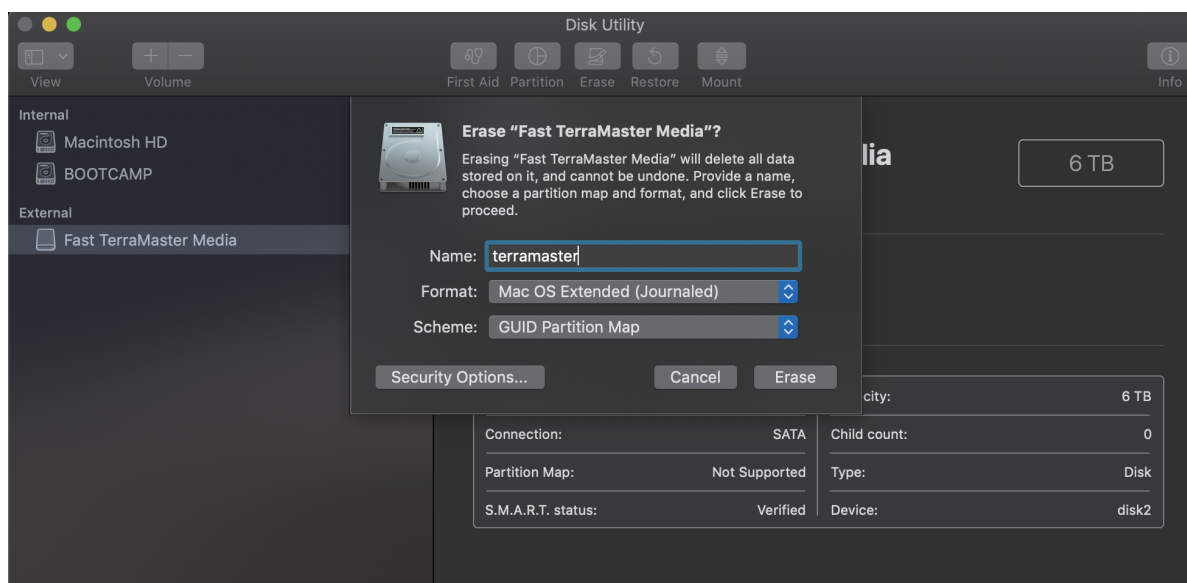
For Mac users, disk array initialisation and formatting can be completed as below:

A. Go to GO > Application Tool > Disk Utility > External;

b. Locate an uninitialized external disk in the menu (this will be the TerraMaster array);



C. Choose external disk, then click “Erase”. Now, fill in the settings in the “Erase” menu, and click “Erase”. Once the erase process is finished, disk array initialisation is complete;



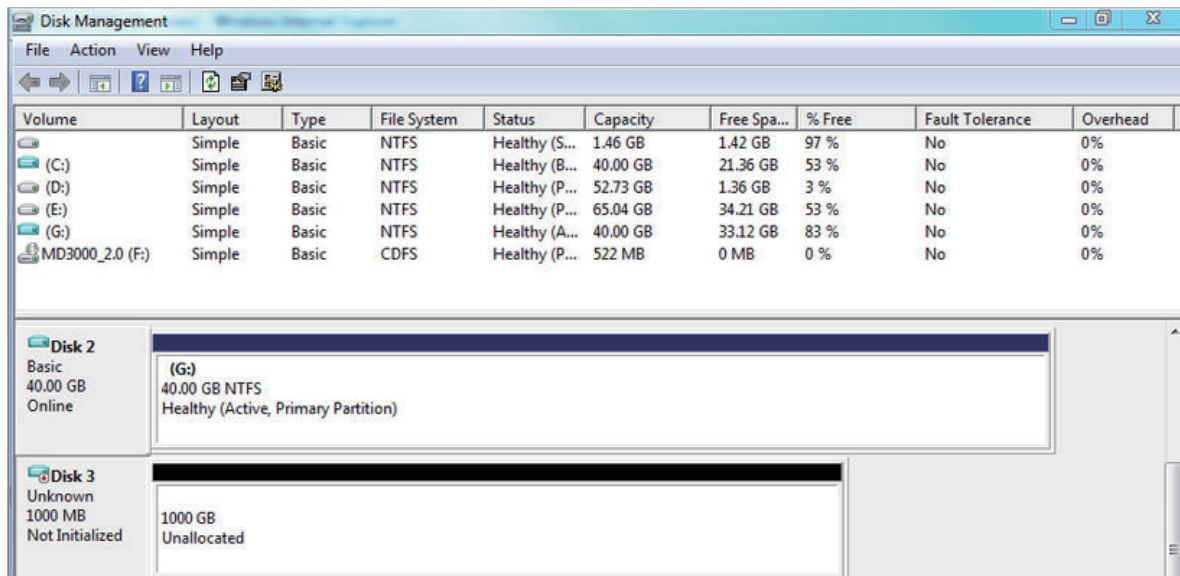
For Windows users, disk array initialisation and formatting can be completed as below:

(i) Move your cursor to “My Computer”, then right-click;

(ii) Go to Property > Disk Management;

(iii) Locate the unallocated disk in the menu, then initialise and format it.

(iv) If you having difficulties initialising and formatting the array, please see Windows’ help file.



Warning!

Creating or changing RAID may lead to formatting of hard drives, and consequently all the data on the hard drives will be deleted. Please back up the data in the hard drives beforehand.

7. Data Recovery

If one of the hard drives becomes faulty while the device is in RAID 1, you can replace the faulty hard drive, and data will be automatically recovered.

Note:

While you are replacing the faulty hard drive, this device needs to remain powered on and connected to the computer. The capacity of the new hard drive should be larger than or equal to that of the faulty hard drive. The amount of time that data recovery takes depends on the capacity of the hard drive. It ranges from a few hours to tens of hours. The device and the computer need to remain powered on during data recovery. During the data recovery, the indicator of the newly inserted hard drive (referred to as the secondary disk) flashes orange, and the indicator of the original drive flashes green.